

State of Rhode Island and Providence Plantations

Budget



Fiscal Year 2013

Volume 1 – General Government, Quasi-Public
Agencies and Component Units

Lincoln D. Chafee, Governor

Agency

Office Of Lieutenant Governor

Agency Mission

To fulfill the constitutional and statutory functions of the law for the Office of Lieutenant Governor.

Agency Description

The Lieutenant Governor was established as one of the five general offices subject to voter election under the Constitution of Rhode Island. The Office of the Lieutenant Governor is an organization within the Executive Department. The Lieutenant Governor fulfills the executive responsibilities of the Governor upon his/her death, resignation, impeachment or inability to serve. The Lieutenant Governor appoints members of the general public to serve on committees and commissions established by the General Assembly. Additionally, the Lieutenant Governor chairs and serves on various commissions and advisory boards. The Office of the Lieutenant Governor initiates legislation and has assumed advocacy and leadership roles in such areas as emergency management, veterans affairs, education, economic development, the environment, long-term care, health care and elderly affairs. The Office also serves as a liaison between citizens and state agencies.

Statutory History

Article IX, Sections 1 and 9 through 11 of the Constitution of Rhode Island specify the Lieutenant Governor's elected power, duties in the case of death, resignation, impeachment of the Governor, responsibilities in the case of a vacancy of position, and compensation. Article IV, Sections 1 and 3 of the Constitution of Rhode Island address the quadrennial election process by the voters of Rhode Island and the transition responsibility for the Lieutenant Governor.

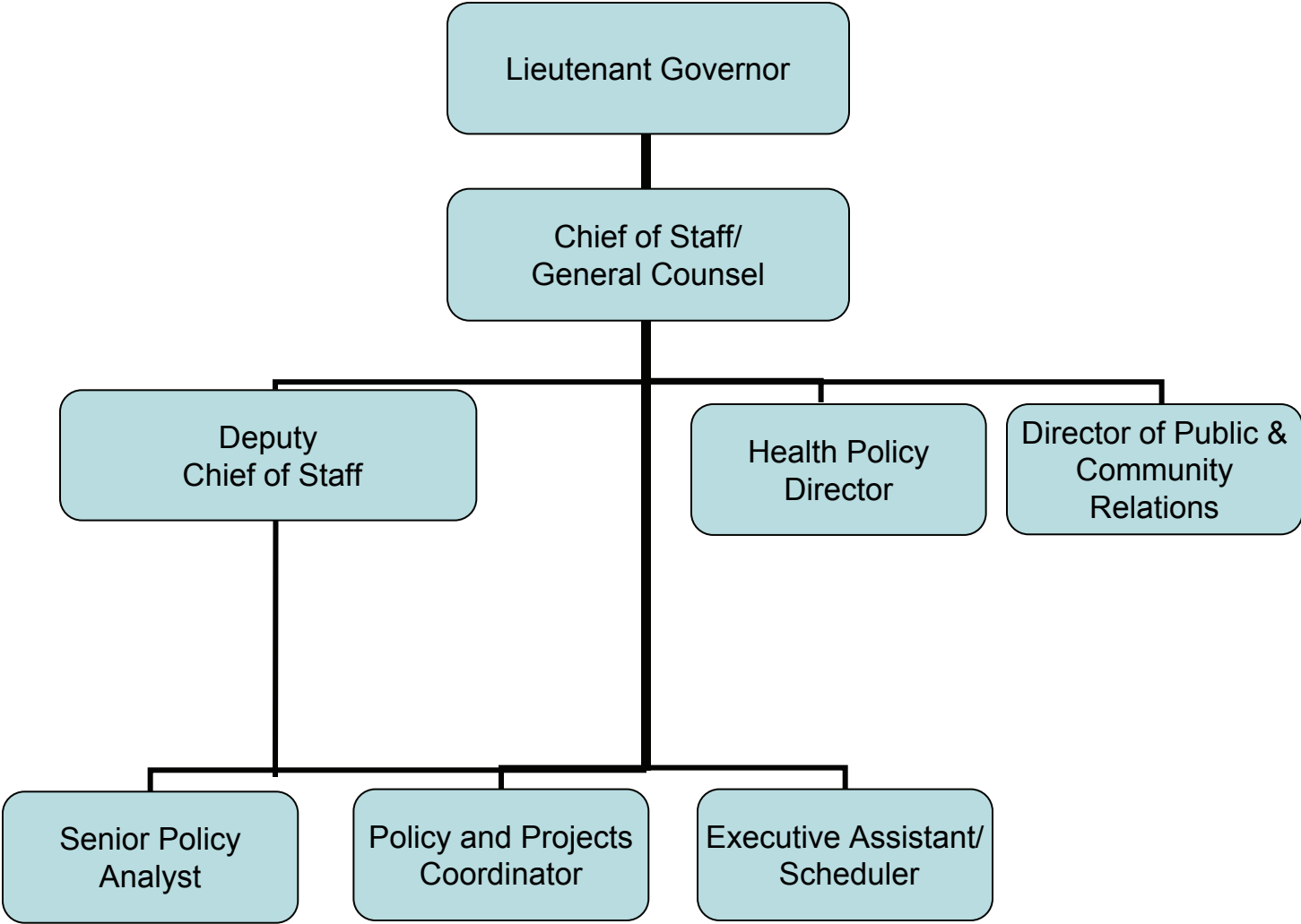
Budget

Office Of Lieutenant Governor

| | FY 2010 Audited | FY 2011 Audited | FY 2012 Enacted | FY 2012 Revised | FY 2013 Recommend |
|--|--------------------|--------------------|--------------------|--------------------|----------------------|
| Expenditures By Program | | | | | |
| Lt. Governor's Office - General | 848,369 | 890,413 | 1,090,172 | 1,075,725 | 1,104,018 |
| Total Expenditures | \$848,369 | \$890,413 | \$1,090,172 | \$1,075,725 | \$1,104,018 |
| Expenditures By Object | | | | | |
| Personnel | 817,021 | 865,872 | 1,066,712 | 1,041,358 | 1,065,882 |
| Operating Supplies and Expenses | 31,348 | 23,628 | 22,710 | 29,367 | 36,636 |
| Subtotal: Operating Expenditures | 848,369 | 889,500 | 1,089,422 | 1,070,725 | 1,102,518 |
| Capital Purchases and Equipment | - | 913 | 750 | 5,000 | 1,500 |
| Total Expenditures | \$848,369 | \$890,413 | \$1,090,172 | \$1,075,725 | \$1,104,018 |
| Expenditures By Funds | | | | | |
| General Revenue | 848,369 | 890,413 | 965,940 | 951,109 | 962,955 |
| Federal Funds | - | - | 124,232 | 124,616 | 141,063 |
| Total Expenditures | \$848,369 | \$890,413 | \$1,090,172 | \$1,075,725 | \$1,104,018 |
| FTE Authorization | 8.0 | 8.0 | 8.0 | 8.0 | 8.0 |
| Agency Measures | | | | | |
| Minorities as a Percentage of the Workforce | 33.0% | 29.0% | 12.5% | 12.5% | 12.5% |
| Females as a Percentage of the Workforce | 38.0% | 62.5% | 75.0% | 75.0% | 75.0% |
| Persons with Disabilities as a Percentage of the Workforce | - | - | - | - | - |

The Agency

Office of Lieutenant Governor



Personnel

Office Of Lieutenant Governor Lt. Governor's Office - General

| | Grade | FY 2012 | | FY 2013 | |
|--|-------|------------|--------------------|------------|--------------------|
| | | FTE | Cost | FTE | Cost |
| Unclassified | | | | | |
| Chief of Staff - General Counsel | 8451A | 1.0 | 166,189 | 1.0 | 166,189 |
| Lieutenant Governor | 0531F | 1.0 | 108,808 | 1.0 | 108,808 |
| Director of Public and Community Relations | 8455A | 1.0 | 87,356 | 1.0 | 91,288 |
| Deputy Chief of Staff | 8437A | 1.0 | 80,544 | 1.0 | 80,544 |
| Health Policy Director | 8431A | 1.0 | 77,161 | 1.0 | 79,983 |
| Senior Policy Analyst | 8428A | 1.0 | 56,676 | 1.0 | 56,676 |
| Executive Secretary/Administration | 8424A | 1.0 | 47,721 | 1.0 | 49,324 |
| Policy & Projects Coordinator | 8423A | 1.0 | 43,321 | 1.0 | 44,504 |
| Subtotal | | 8.0 | \$667,776 | 8.0 | \$677,316 |
| Turnover | | | - | | - |
| Subtotal | | | - | | - |
| Total Salaries | | 8.0 | \$667,776 | 8.0 | \$677,316 |
| Benefits | | | | | |
| Defined Contribution Plan | | | - | | 6,773 |
| FICA | | | 47,281 | | 48,010 |
| Medical | | | 101,245 | | 113,735 |
| Payroll Accrual | | | - | | 3,987 |
| Retiree Health | | | 45,810 | | 46,464 |
| Retirement | | | 153,454 | | 143,449 |
| Subtotal | | | \$347,790 | | \$362,418 |
| Total Salaries and Benefits | | 8.0 | \$1,015,566 | 8.0 | \$1,039,734 |
| Cost Per FTE Position | | | \$126,946 | | \$129,967 |
| Statewide Benefit Assessment | | | 25,042 | | 25,398 |
| Subtotal | | | \$25,042 | | \$25,398 |
| Payroll Costs | | 8.0 | \$1,040,608 | 8.0 | \$1,065,132 |
| Purchased Services | | | | | |
| Other Contract Services | | | 750 | | 750 |
| Subtotal | | | \$750 | | \$750 |
| Total Personnel | | 8.0 | \$1,041,358 | 8.0 | \$1,065,882 |

Personnel

Office Of Lieutenant Governor Lt. Governor's Office - General

| | Grade | FY 2012 | | FY 2013 | |
|--|-------|------------|--------------------|------------|--------------------|
| | | FTE | Cost | FTE | Cost |
| Distribution By Source Of Funds | | | | | |
| General Revenue | | 7.0 | 917,299 | 7.0 | 936,145 |
| Federal | | 1.0 | 124,059 | 1.0 | 129,737 |
| Total All Funds | | 8.0 | \$1,041,358 | 8.0 | \$1,065,882 |